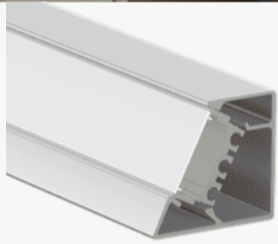
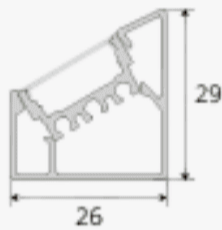


Zenith Edge

Angular Profiles for Modern Interiors.



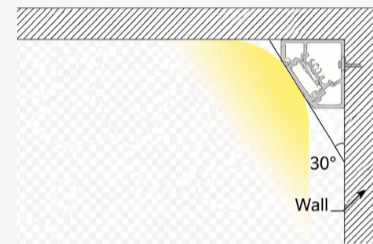
Profile Picture



Cross-Section/
Dimension



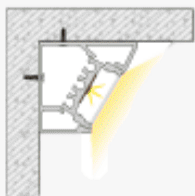
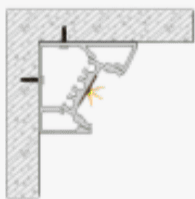
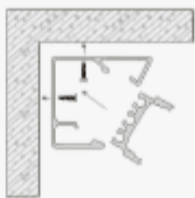
Product Picture



Light Direction

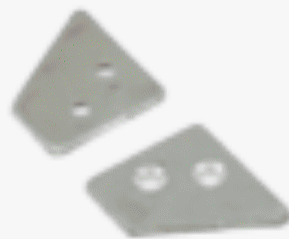
Technical Specifications	
Code	SLL2629Z
Size	26 x 29 mm
CRI	85+
Input Power	24 V DC
IP Rating	IP20/IP54

Custom Options Available	
DIFFUSER	PMMA Diffuser (Opal, White, Frosted, Clear, Black)
CCT	2700K,3000K,3500K,4000K,5000K, 5700K,6000K,6700K
Watts/M	4.5 W - 19.5 W
Beam Angle	30 Degrees
Finish	Custom Size and Custom Powder Coating finish or Anodized finish available upon request as per RAL code
Application	Cove, Aisle, Cabinet, Furniture Racks,



Installation Guide

Installation Accessories



End Caps

Light Direction Plot

