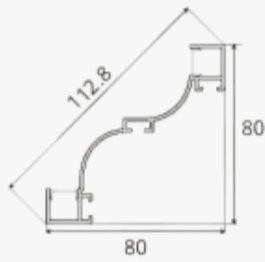


# Vertex Line

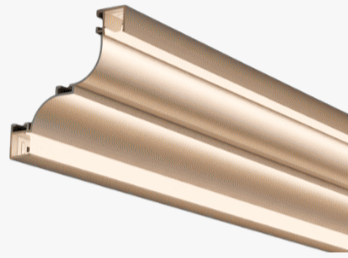
Geometry Enhanced Through Light.



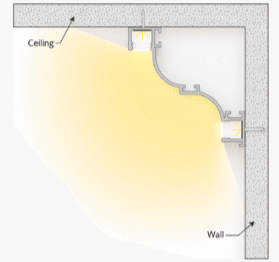
Profile Picture



Cross-Section/  
Dimension



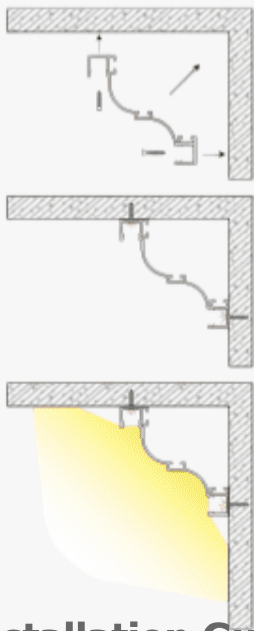
Product Picture



Light Direction

Technical Specifications	
<b>Code</b>	SLL8080Z
<b>Size</b>	80 x 80 mm
<b>CRI</b>	85+
<b>Input Power</b>	24 V DC
<b>IP Rating</b>	IP20/IP54

Custom Options Available	
<b>DIFFUSER</b>	PMMA Diffuser (White, Opal, Milky, Frosted, Clear)
<b>CCT</b>	2700K,3000K,3500K,4000K,5000K, 5700K,6000K,6700K
<b>Watts/M</b>	4.5 W - 11.5 W
<b>Beam Angle</b>	120 Degrees
<b>Finish</b>	Custom Size and Custom Powder Coating finish or Anodized finish available upon request as per RAL code
<b>Application</b>	Cove Lighting Without False Ceiling

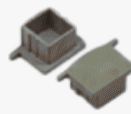


Installation Guide

## Installation Accessories

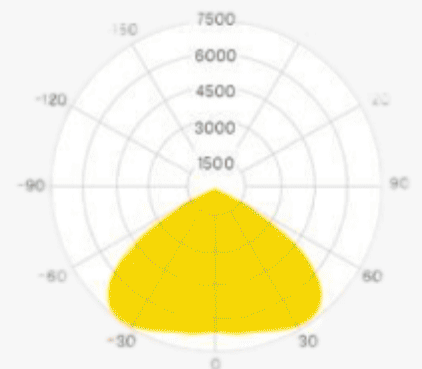


Mounting Clips



End Caps

## Light Direction Plot



120°