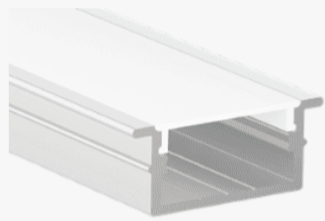
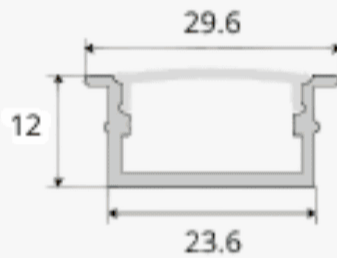


Quasar Beam

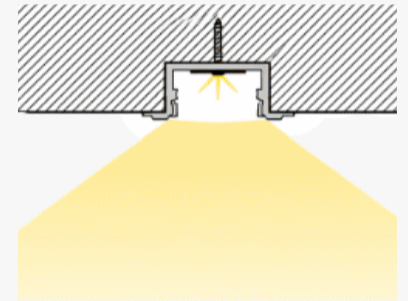
Commercial linear lighting for recessed applications



Profile Picture



Cross-Section



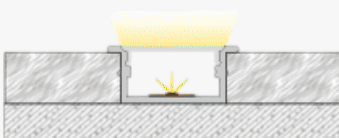
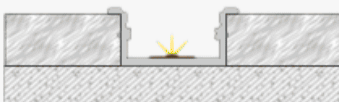
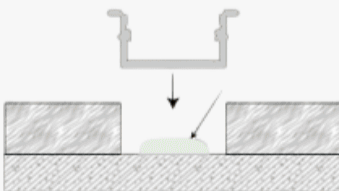
Light Direction

Technical Specifications

Code	SLL2912X
Size	29.6 x 12 mm
CRI	85+
Input Power	24 V DC
IP Rating	IP40/IP54

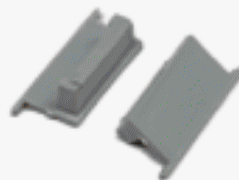
Custom Options Available

DIFFUSER	PMMA Diffuser (Opal, Frosted, Milky)
CCT	2200K - 10000K, Tunable White, RGB, RGBW, RGBWW
Watts/M	4.5W - 19.5 W
Light Direction	120 Degrees
Finish	Custom Size and Custom Powder Coating finish or Anodized finish available upon request as per RAL code
Application	Recessed Ceiling, Above Study Table, Wardrobe, Cabinet, Furniture Racks, Recessed Task Lighting Application



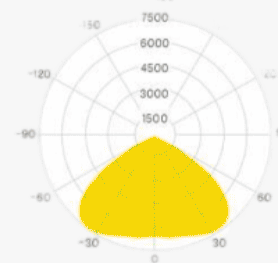
Installation Guide

Installation Accessories



End Caps

Light Direction Plot



120°