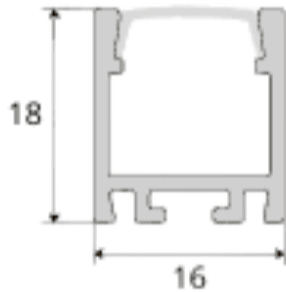
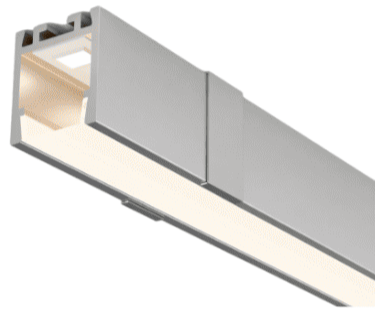


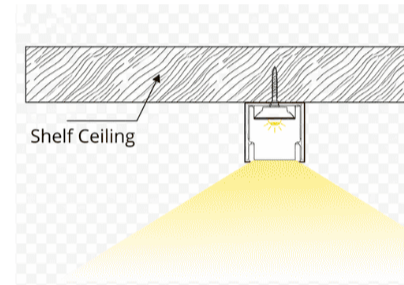
Profile Photo



Profile Dimension



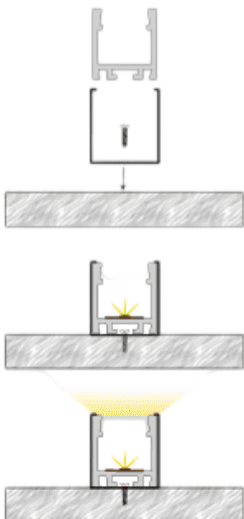
Product Picture



Light Direction

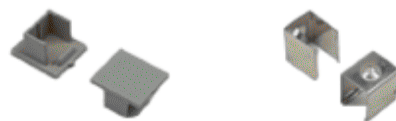
Technical Specifications	
<b>Code</b>	SLL1618Z
<b>Size</b>	16 x 18 mm
<b>CRI</b>	85+
<b>Input Power</b>	24 V DC
<b>IP Rating</b>	IP40/IP54

Custom Options Available	
<b>DIFFUSER</b>	PMMA Diffuser (Opal, Milky, Frosted)
<b>CCT</b>	2200K/2700K/3000K/3500K /4000K/5000K/6000K/6500K , Tunable White, RGB, RGBWW, RGBA
<b>Watts/M</b>	4.5W - 19.5 W
<b>Beam Angle</b>	120 Degrees
<b>Finish</b>	Custom Size and Custom Powder Coating finish or Anodized finish available upon request as per RAL code
<b>Application</b>	Vertical Surface Lighting, Mirror Edge Lighting, Cabinet Profiles, Joinery Illumination, Architectural Accents, Decorative Wall Details



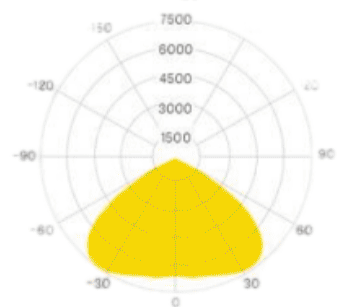
Installation Guide

### Installation Accessories



End Caps and Mounting Cap

### Light Direction Plot



120°