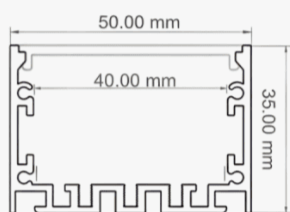




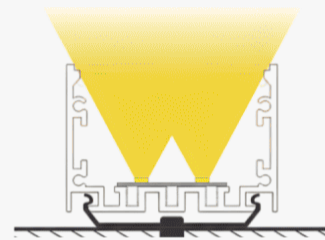
Profile Picture



Profile Dimension



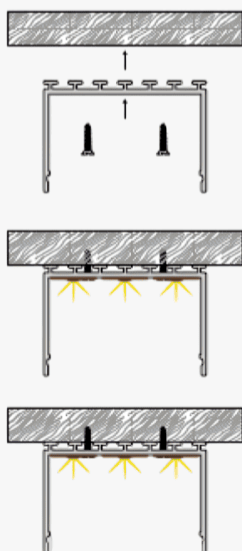
Product Picture



Light Direction

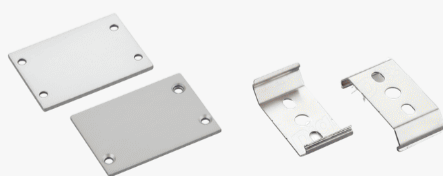
| Technical Specifications | |
|--------------------------|----------------|
| Code | SLL5035 |
| Size | 50.0 x 35.0 mm |
| CRI | 85+ |
| Input Power | 24 V DC |
| IP Rating | IP20/IP54 |

| Custom Options Available | |
|--------------------------|---|
| DIFFUSER | PMMA Diffuser (Opal) |
| CCT | 2200K/2700K/3000K/3500K/4000K/5000K/6000K/6500K, Tunable White, RGB, RGBW, RGBWW |
| Watts/M | 11.5W- 40.5 W |
| Beam Angle | 120 Degrees |
| Finish | Custom Size and Custom Powder Coating finish or Anodized finish available upon request as per RAL code |
| Application | Commercial Interiors, Ceiling Geometry, Workspace Lighting, Retail Environments, Continuous Linear Runs, Architectural Lighting |



Installation Guide

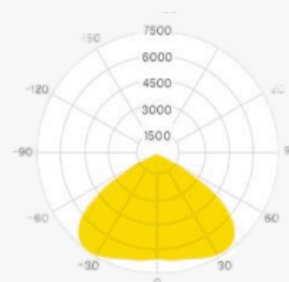
Installation Accessories



End Caps

Mounting Clips

Light Direction Plot



120°