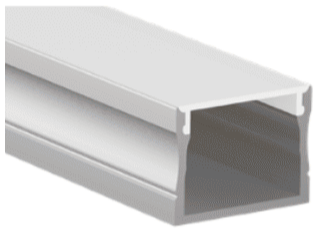
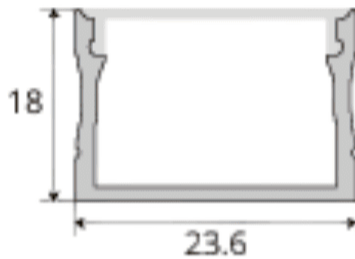


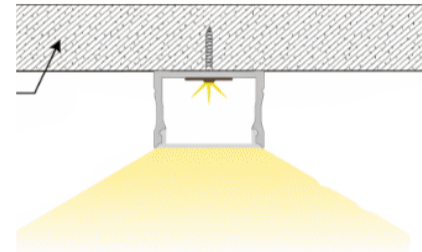
Low-profile lighting for seamless integration in tight spaces



Profile Photo



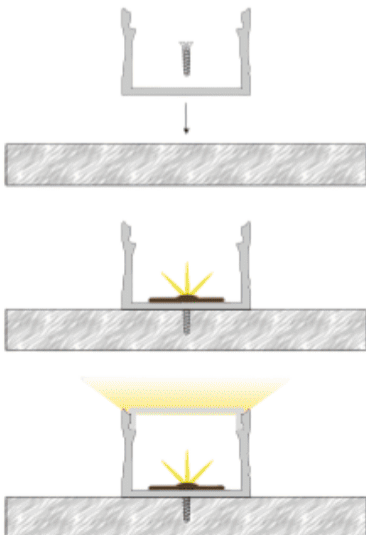
Cross-Section



Light Direction

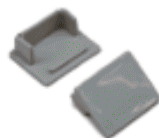
Technical Specifications	
Code	SLL2318Z
Size	23 x 18 mm
CRI	85+
Input Power	24 V DC
IP Rating	IP40/IP54

Custom Options Available	
DIFFUSER	PMMA Diffuser (Opal, Milky, Frosted)
CCT	2200K/2700K/3000K/3500K /4000K/5000K/6000K/6500K , Tunable White, RGB, RGBWW, RGBA
Watts/M	4.5W - 22.5 W
Beam Angle	120 Degrees
Finish	Custom Size and Custom Powder Coating finish or Anodized finish available upon request as per RAL code
Application	Trimless Recessed Lighting, Seamless Ceiling Lines, Minimalist Interiors, Architectural Grooves, Continuous Linear Illumination, Modern Commercial Spaces



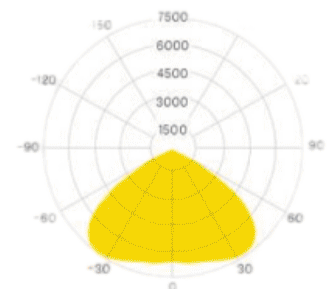
Installation Guide

Installation Accessories



End Caps

Light Direction Plot



120°