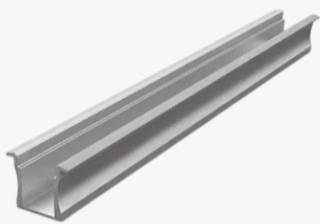


# HyperBeam

Defined by Precision. Hidden by Design.



Profile Picture

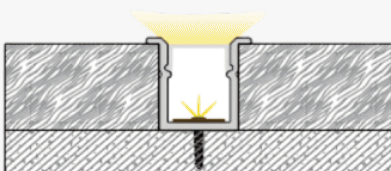
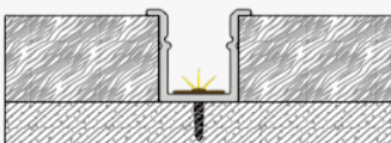
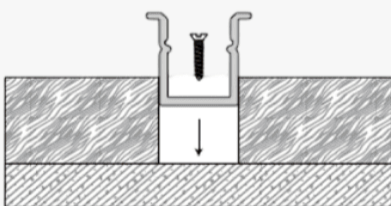
Cross-Section

Product Picture

Light Direction

Technical Specifications	
<b>Code</b>	SLL2318
<b>Size</b>	23.20 x 18.65 mm
<b>CRI</b>	85+
<b>Input Power</b>	24 V DC
<b>IP Rating</b>	IP20/IP54

Custom Options Available	
<b>DIFFUSER</b>	PMMA Diffuser (Clear, Milky, Frosted, Opal)
<b>CCT</b>	2200K/2700K/3000K/3500K/4000K/5000K/6000K/6500K, Tunable White, RGB, RGBW, RGBWW, RGBA
<b>Watts/M</b>	4.5W - 19.5 W
<b>Light Angle</b>	120 Degrees
<b>Finish</b>	Custom Size and Custom Powder Coating finish or Anodized finish available upon request as per RAL
<b>Application</b>	Architectural Highlighting, Recessed Ceiling Lines, Display Shelving, Furniture Detailing, Surface Grazing, Seamless Linear Lighting

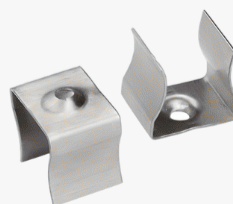


Installation Guide

## Installation Accessories

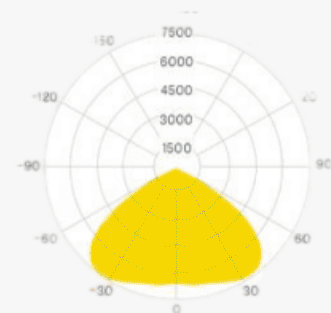


End Caps



Mounting Clips

## Light Direction Plot



120°