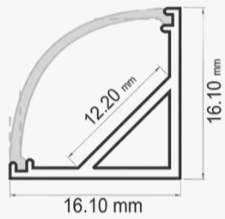




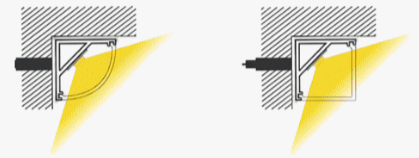
Profile Picture



Cross-Section/
Dimension



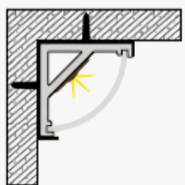
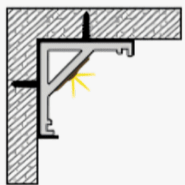
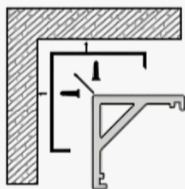
Product Picture



Light Direction

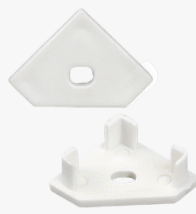
Technical Specifications	
Code	SLL1616
Size	16.10 x 16.10 mm
CRI	85+
Input Power	24 V DC
IP Rating	IP20/IP54

Custom Options Available	
DIFFUSER	PMMA Diffuser (Opal, Black, Frosted, Milky, Clear)
CCT	2700K/3000K/3500K/4000K, 5000K/5700K/6000K/6700K, Tunable White, RGB, RGBW, RGBWW
Watts/M	4.5 W - 19.5 W
Beam Angle	120 Degrees
Finish	Custom Size and Custom Powder Coating finish or Anodized finish available upon request as per RAL code
Application	Display Lighting, Cove Lighting, Closet Lighting, Under-Cabinet Lighting, Decorative Lighting, Kitchen & Bedroom Lighting



Installation Guide

Installation Accessories



End Caps



Mounting Clips

Light Direction Plot

